

FEI-LA NEWS

Information | Community | Advocacy



Tone From The Top

In leadership, the "tone from the top" is paramount. The ethical and cultural tone set by an organization's leaders, especially senior executives, holds immense importance for several reasons.

Leaders profoundly influence an organization's culture. Their actions establish the standard for ethical behavior, integrity, and adherence to the organization's values.

Leaders impact employee engagement by serving as role models. A positive tone from leaders can boost morale and commitment, while the opposite can lead to demotivation and trust erosion.

Alignment with organizational goals is crucial, as leaders must embody and communicate the mission and objectives to ensure a cohesive direction.

In conclusion, the "tone from the top" is vital, as it shapes behavior, molds culture, influences decisions, and impacts an organization's success and reputation. Effective leaders understand this responsibility and strive to establish a positive and ethical tone at the organization's highest levels. At FEILA, we help leaders become better.

Mark Green
Chapter President



Balancing Over-Connectedness with Genuine Relationships

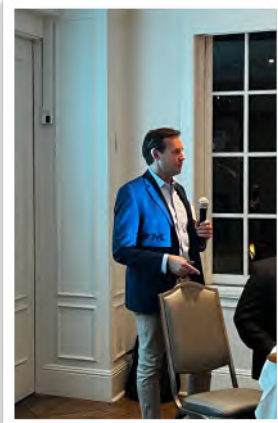
In a world where we're more connected digitally than ever before, the paradox of feeling over-connected but "under-related" persists. Social media and online networks can provide an abundance of superficial connections, leaving us longing for meaningful relationships. Here's where FEI shines.

FEI offers a unique solution to this modern dilemma. We bring together individuals with shared interests, careers, or goals, providing a fertile ground for forming genuine relationships. Through conferences, seminars, and networking events, members have the chance to connect face-to-face, fostering authentic connections that transcend the digital realm.

As a member of FEI, you enhance your career prospects and enrich your social life. It's the antidote to the over-connected vs. under-related conundrum, striking a balance modern life often lacks. So, take the step to recommend FEI, and help your peer discover the depth and authenticity meaningful relationships can bring.

In Case You Missed It...

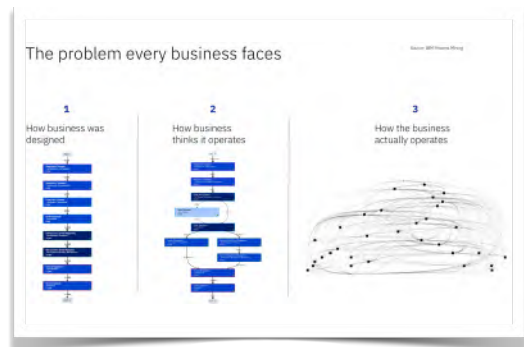
October was another SELLOUT



Michael Hinds, IBM

Michael Hinds and Joel Garnatz, experts from IBM software, delved into the practical applications of AI in driving efficient and effective process improvements. They highlighted the numerous challenges faced by companies dealing with complex processes and attempting digital transformation. The sobering truth is that most implementations fall short of achieving their desired objectives and fail to fully optimize processes. A primary issue is the lack of visibility into the actual state of their processes. More often than not, real processes operate in ways that diverge significantly from their intended design or our assumptions about their operations.

The session also shed light on the advantages of process mining and the creation of a “digital twin” of your processes. This innovative approach offers unparalleled insight and comprehension of what a digitally optimized process truly entails and the substantial value it can bring to your organization. While process mining has been in existence for quite some time, the integration of ML and AI in creating a digital twin represents a transformative leap forward.



Process Complexity
 +
Lack of Visibility
 =
Silent Killer of Performance



PD Workshop + Happy Hour

Nov 16 @ 2p-7p
RSM DTLA offices
Los Angeles, CA

Topic: Ransomware, stolen identity, redirected bank transfers and reputation risk.



Rob West, RSM



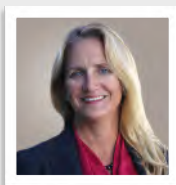
Jogesh Chambria, RSM

Topic: Achieving The One-Day Close



Ellen Class, RGP

Topic: Truth About Employment Trends



Mimi Taylor, Roth Staffing Companies



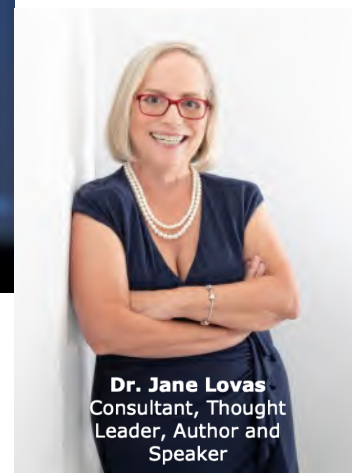
515 S. Flower Street, 17th Floor
Los Angeles, CA 90071
2p - 7p

Coming Events

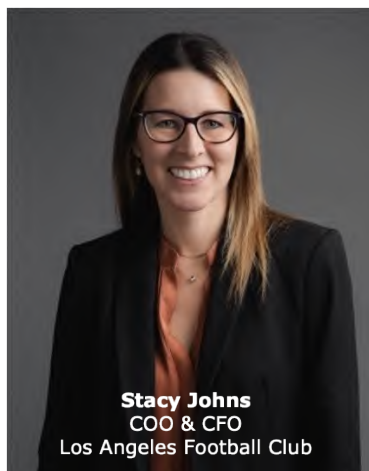
- **Nov 8/9/10** - Area Lunches
- **Nov 16** - Afternoon Workshop (2p - 7p)
- **Dec 8/13/14** - Area Lunches
- **Jan 11/12** - Area Lunches
- **Jan 18** - Dr. Jerry's economic forecast
- **Feb 15** - Leading with Love by Dr. Jane Lovas
- **Mar 21** - Sport Entertainment with Former Golden State Warriors CFO
- **Apr 18** - LAFC COO & CFO



Dr. Jerry Nicklesburg
Senior Economist
UCLA Anderson



Dr. Jane Lovas
Consultant, Thought Leader, Author and Speaker

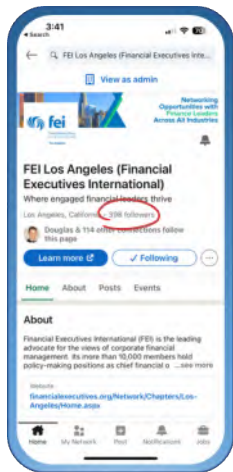


Stacy Johns
COO & CFO
Los Angeles Football Club

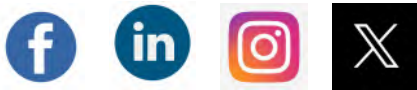


Jen Calbaquinto
CFO @ EMPIRE
Former CFO @ Golden State Warriors

Spread the Word



Please spread the word about FEI-LA among your friends and colleagues. The power of our network lies in its diversity and the collective wisdom we bring to the table. By inviting others to join us, you are not only expanding your own network but also enriching the experiences of those around you. Let's continue to elevate the standing of financial executives in Los Angeles together. We are on **all social platforms**.



Chapter Sponsors

We'd like to extend a big **THANK YOU** to our Chapter Sponsors. Your unwavering support is integral to our finance community's success. We deeply appreciate your partnership.

Platinum Sponsors



Gold Sponsors



Three Steps to achieve your goals RIGHT NOW

1

BE SPECIFIC; BE FLEXIBLE

Be specific about your goals & write them down. However, be nimble to course correct, as needed

2

DREAM BIG; ACT SMALL

Break down your goals into smaller tasks

3

TAKE A FIRST STEP, NOW!

Act now. Take a first step and another until you reach the end!

Los Angeles Officers



Mark Green
President



Luis Toledo
VP Membership



Yuliya Kaminskaya
Treasurer



Mitchell Rusbarsky
Director & Past President



Nicholas Koutouras
VP Programs & National Liaison



Roger Stephens
Director & Past President



Brian Parisi
Secretary



Christine Bell
Chapter Administrator



Jason Shapiro
VP Sponsorships



Gigi Furlong
Chapter Administrator

Invite a friend or colleague to join. [Click here](#)



Advancing success through information, community and advocacy since 1931.

Financial Executives International (FEI) is a leading association comprised of nearly 10,000 members who hold positions as Chief Financial Officers, Chief Accounting Officers, Controllers, Treasurers, and Tax Executives at companies in every major industry.

FEI enhances member professional development through peer connections, career management services, conferences, research and publications.

Members participate in the activities of more than 65 Chapters in the U.S. FEI is located in Morristown, NJ. FEI is where engaged financial leaders thrive.